



Radial Name Design
Remote Assignment Instruction Packet

What is Symmetry?

symmetry

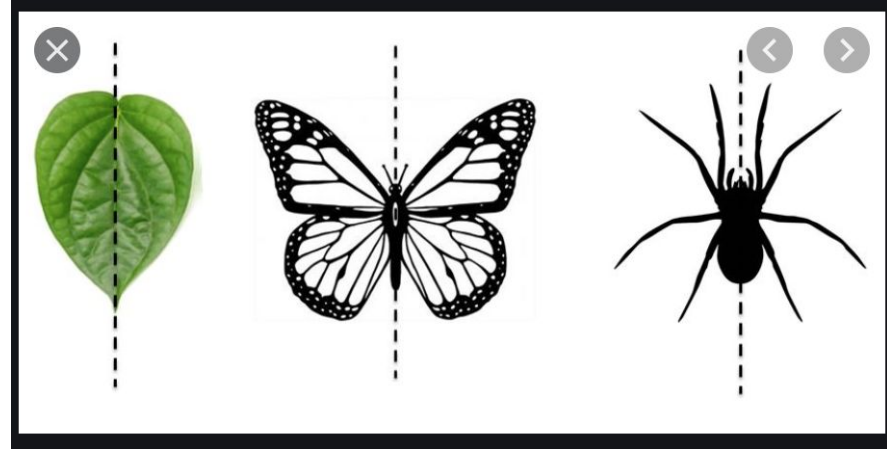
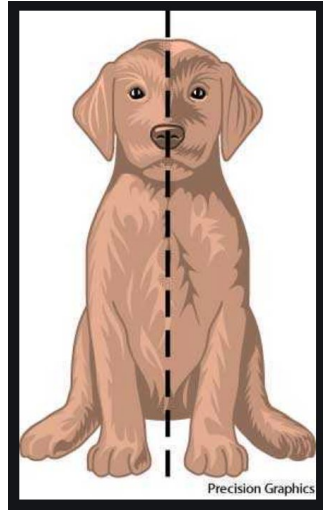
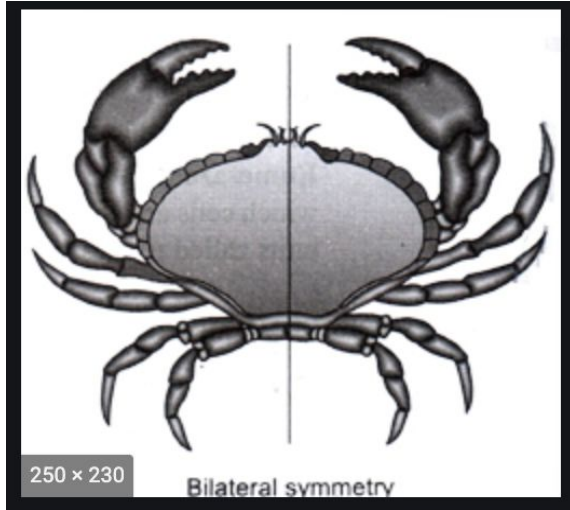
looks the same on both sides of a midline or axis



©Study.com

This type is called Bilateral Symmetry

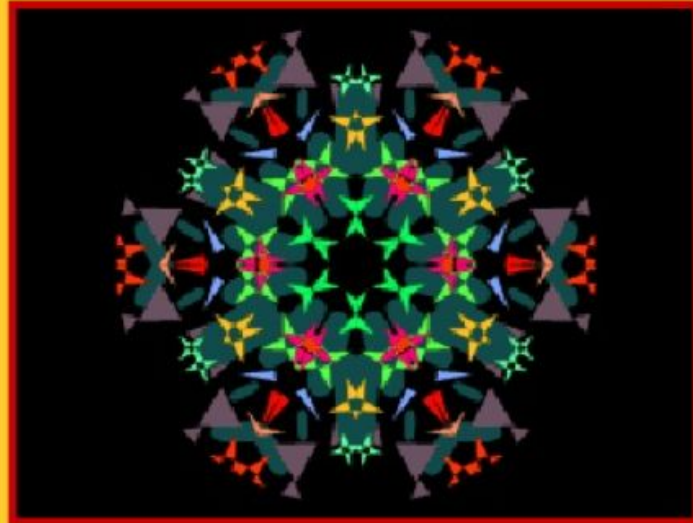
Examples of Bilateral Symmetry:



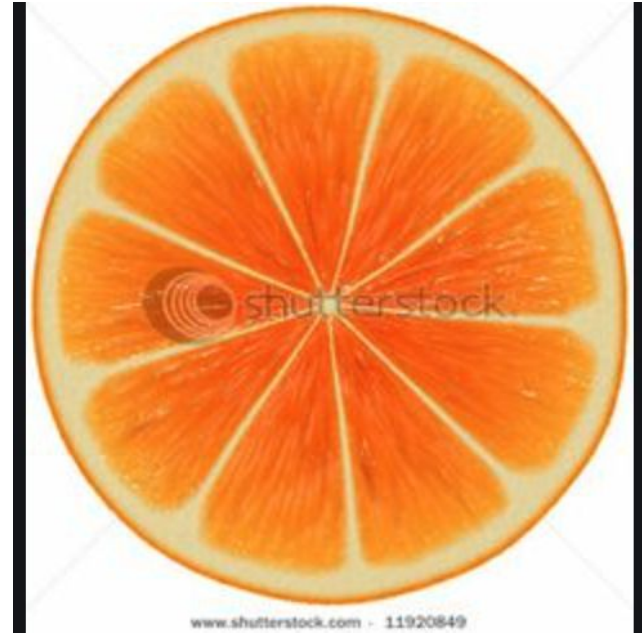
What is Radial Symmetry?

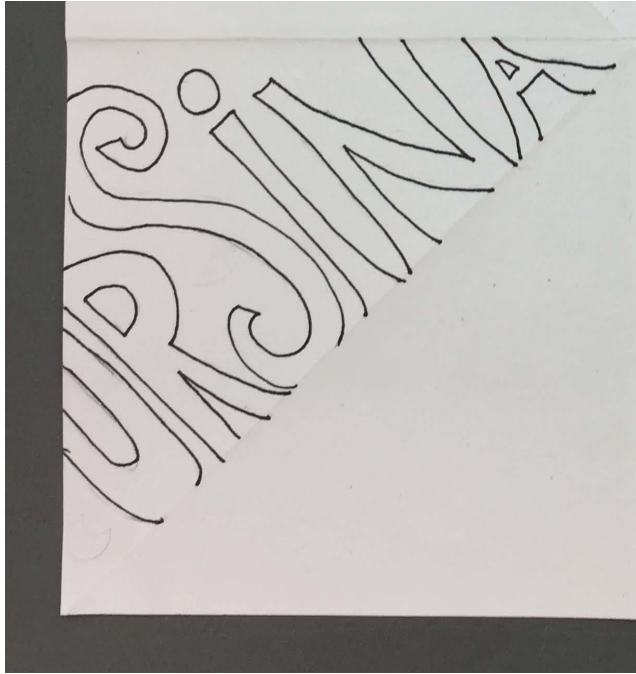
Radial Symmetry

Radial symmetry or balance is a type of balance in which the parts of an object or picture are regularly arranged and radiate from a central point. It appears both in natural and in human-made objects.

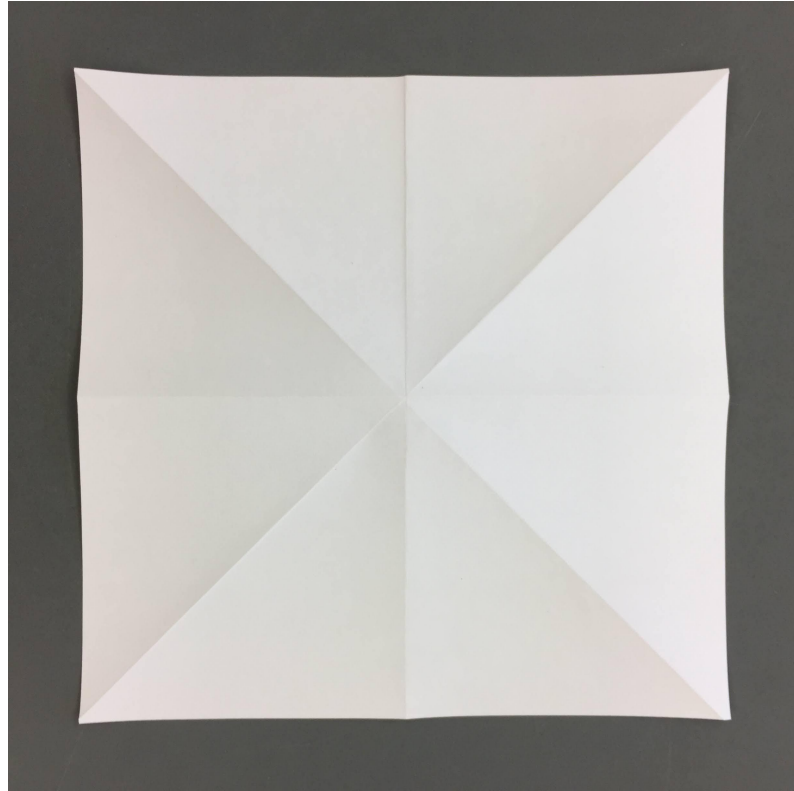


Examples of Radial Symmetry in Art and Nature:





We are going to create a radial symmetry design using **OUR NAMES!**
Can you see how my first name, (Ursina) is traced repeatedly to create the design on the right?



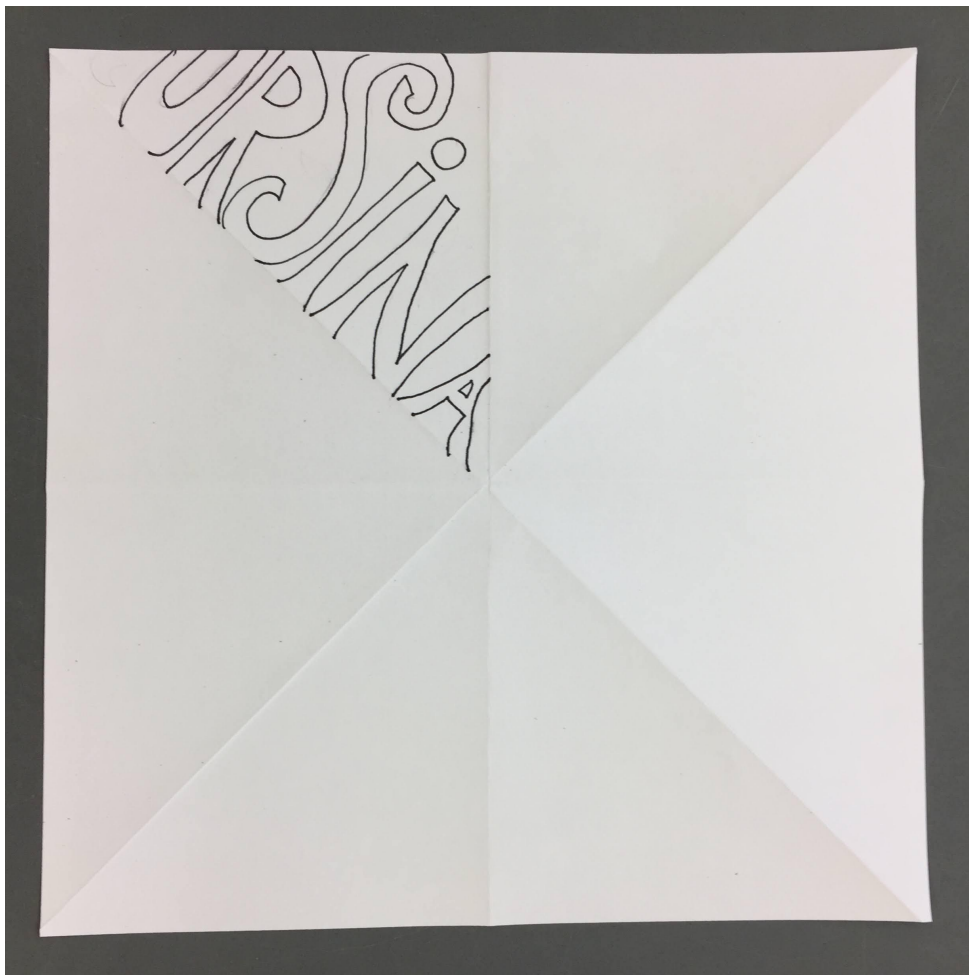
Neatly fold a square piece of paper into 1/8th sections

1.) Fold corner-to-corner in both directions

2.) Fold horizontally **and** vertically

IT IS VERY IMPORTANT TO ALIGN YOUR EDGES AS PRECISELY AS YOU CAN!

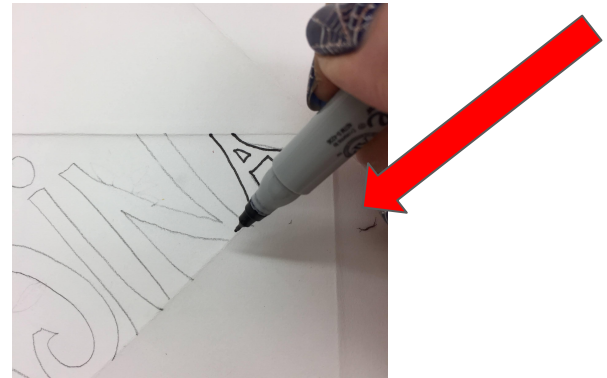
**Do you have 8 triangular sections?
If so, you did this correctly!
:-)**

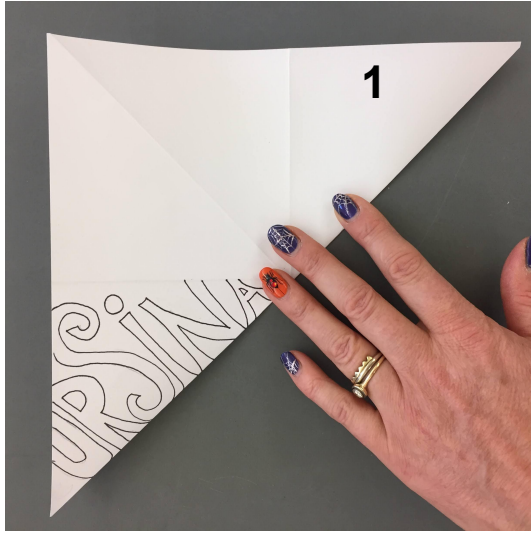


Now, in ONE triangle, write your first or last name in a funky way!

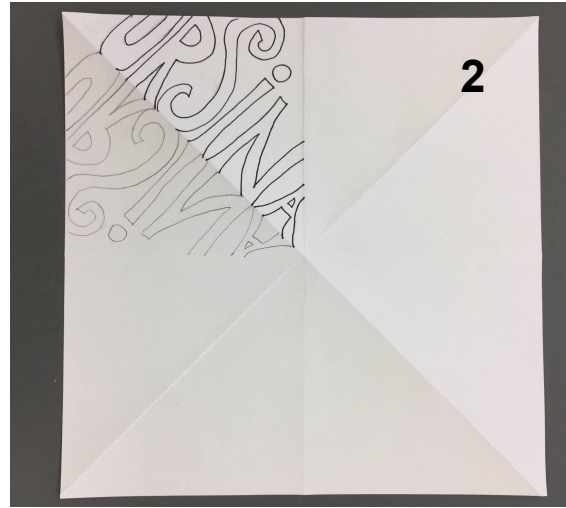
- Bubble letters work best
- Some letters should touch the edges or sides
- Do NOT extend beyond one triangle. (Your letters can be cut off at the edge, but may NOT extend into the next space.)

DO THIS WITH PENCIL FIRST, THEN SHARPIE IT WHEN YOU ARE HAPPY!

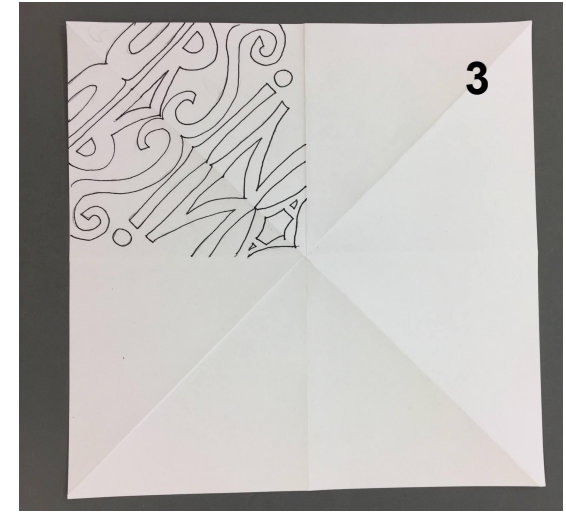




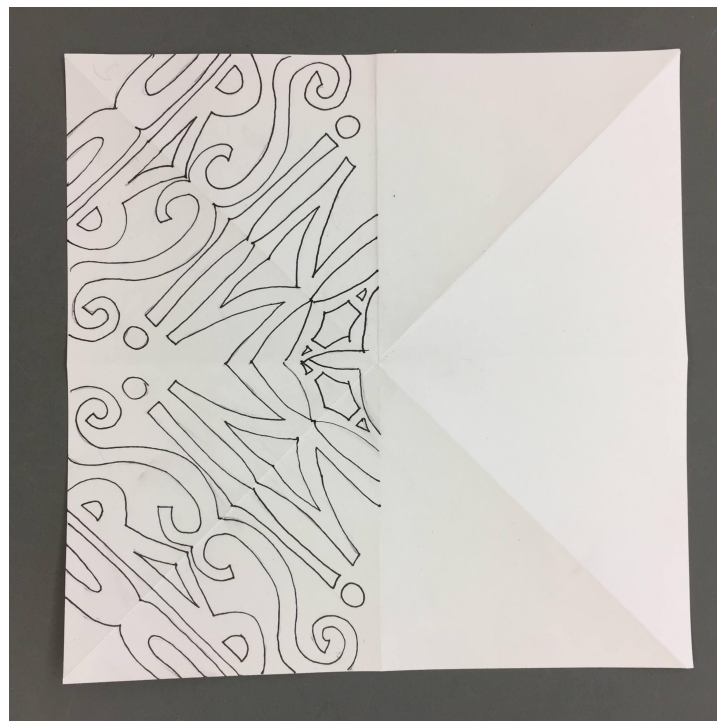
Now, fold the paper along one of the creases so that you can see your name.



At a bright window, trace your name into an adjoining section with pencil. When you unfold your paper, you will see your original name AND a mirror-image tracing of it!

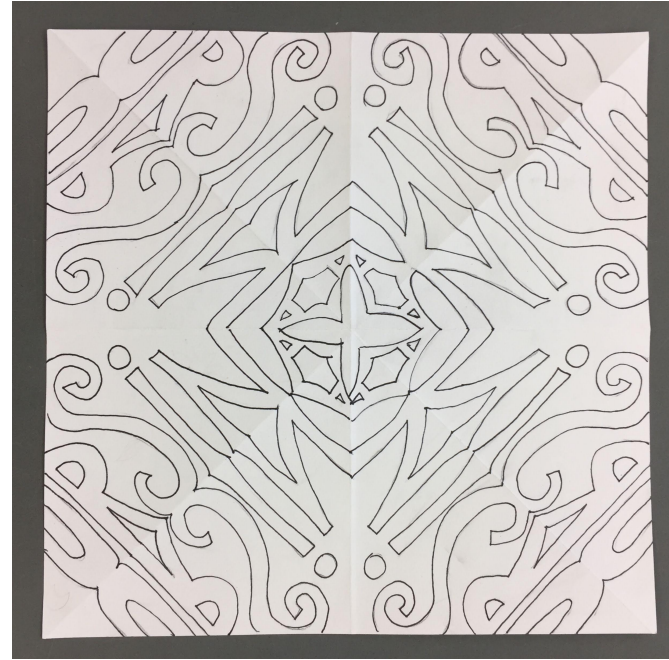
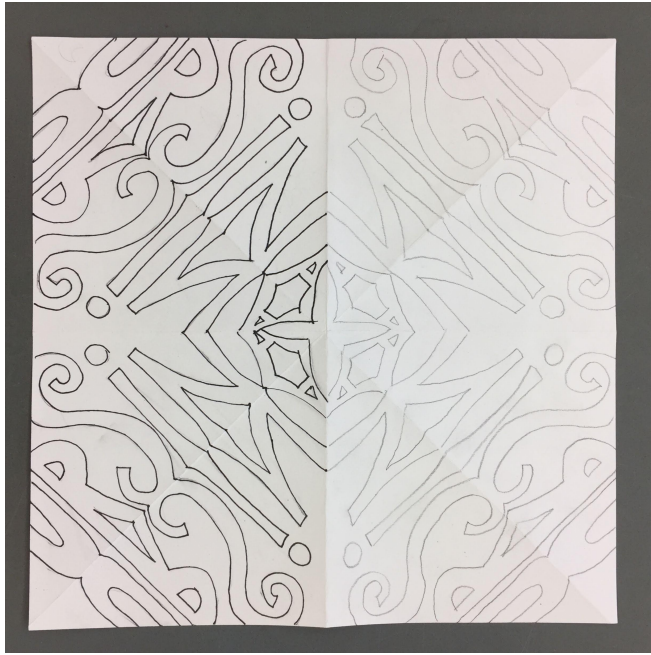


Sharpie over the tracing carefully.



Now you can trace two
sections at a time.
Pencil first...

...Then Sharpie!!!



Now, at the window you can trace the entire remaining half. First with pencil...

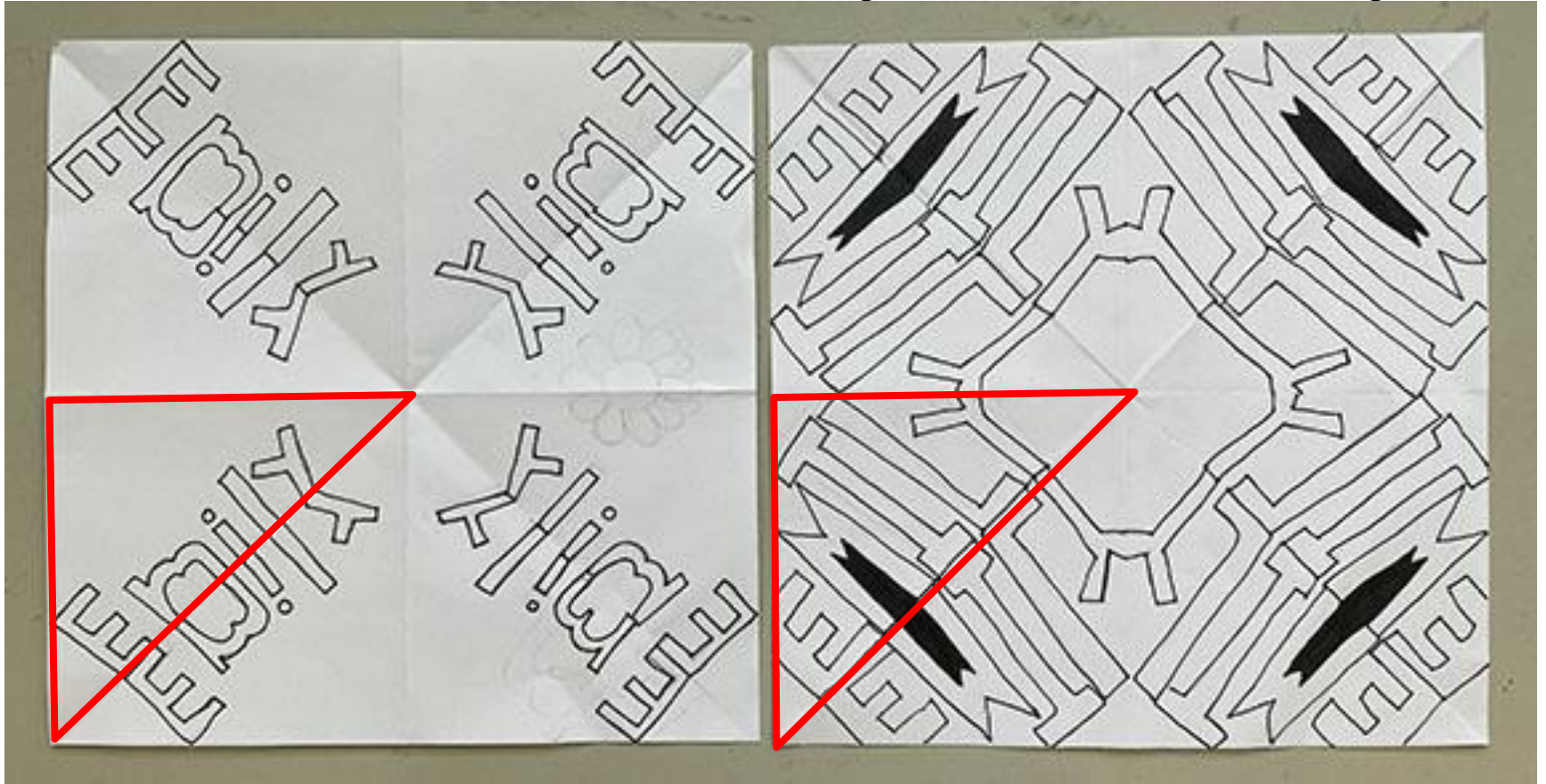
Then with Sharpie!



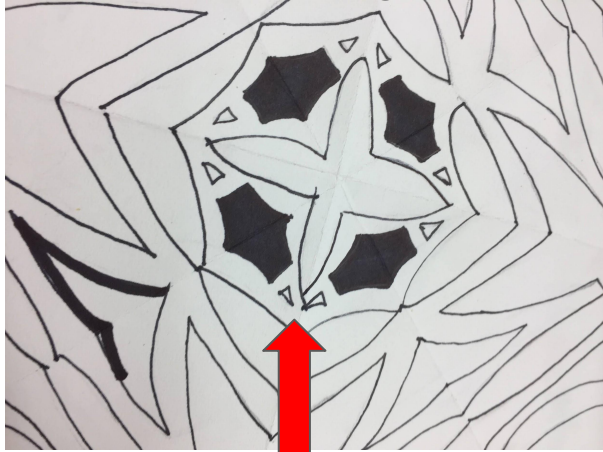
TIP: If you OVERLAP letters in your design and make your letters a little funky and unusual, you can get some really cool effects when you start repeating and tracing it!

If you write very small, your finished design will be simple and empty... :-)

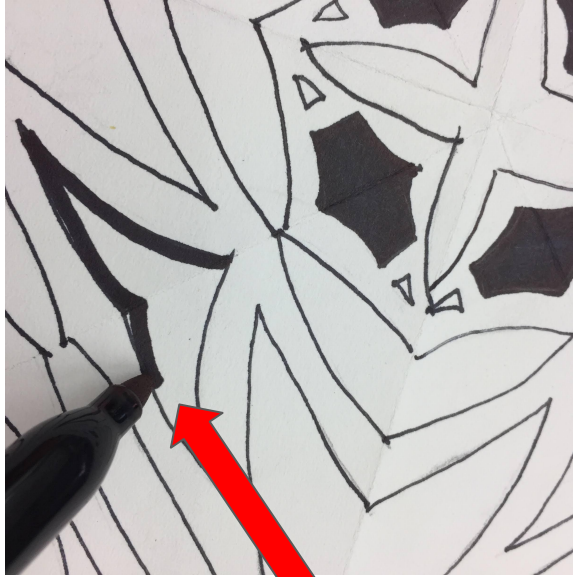
If you **FILL THE TRIANGLE**, your finished design will be **MUCH** more interesting!!



Finished Tracing?



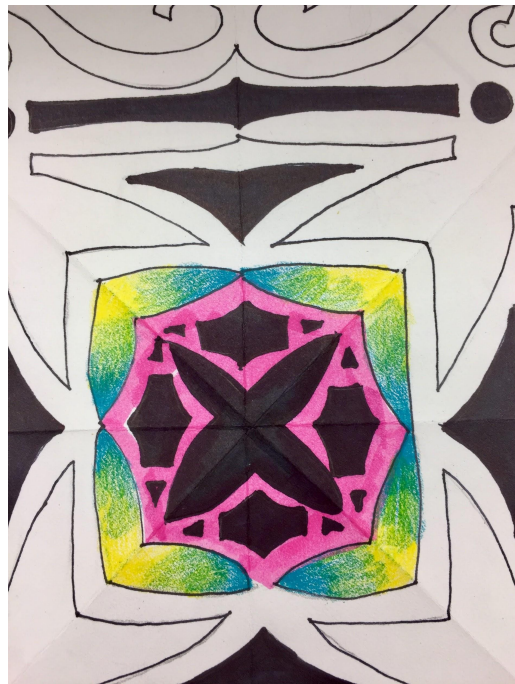
Next, go in with Sharpie and find some SHAPES to color in solid black.



(HINT: It's a good idea to outline those shapes first, to keep the edges neat.)



Whatever you color in, you must color **all the matching shapes in the design** in order to keep the radial symmetry pattern correct!



COLOR OPTIONS:

Markers: Good for smooth, consistent color. *The Pink center is marker.*

Colored pencils: Good for blending effects, harder to keep consistent. *The Blue/Green/Yellow area is Colored Pencil.*

You may mix and match both materials, or just choose one or the other

Color GOALS

- No large white (uncolored) areas. You may choose to leave some small elements uncolored, but over 90% of the overall design MUST be colored.
- Neat and consistent work! Stay in the lines, take your time, etc.
- Radial symmetry is demonstrated: all matching shapes are colored the same.

